

PES 201 Ceramic Repair Paste

PES 201 Ceramic Repair Paste is a two component solvent free epoxy metal repair compound. The product has been designed for use on a wide range of metallic surfaces subject to abrasion and impact. The product is suitable for emergency repairs or part of planned maintenance to equipment such as worn impellers, damaged valves, eroded separator housings, damaged pump casings, eroded pipe work, propellers, bow thrusters, rudders, corroded water boxes and eroded end plates and tube sheets.

Main characteristics -

- Two component
- Solvent free epoxy
- 3:1 mixing ratio by volume
- Usable life 25 minutes @68°F (20°C)
- Touch dry 90 mins @ 68°F (20°C)
- Full cure 3 days @ 68°F (20°C)
- 100 Rockwell R Hardness (Once fully cured)
- Applied by spatula or applicator tool
- Available in 500gm, 1kg, 2kg, 3kg, 30kg pack sizes

Mechanical Properties –

Adhesion

Tensile Shear to ASTM D1002 2675psi (188kg/cm²)

Compressive strength

Tested to ASTM D 695 15,500p (1089kg/ cm²)

Corrosion Resistance

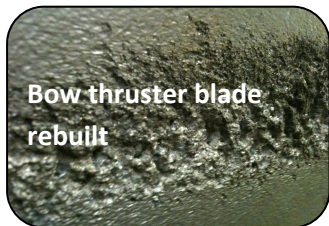
Tested to ASTM B117 Minimum 5000 hours

Flexural Strength

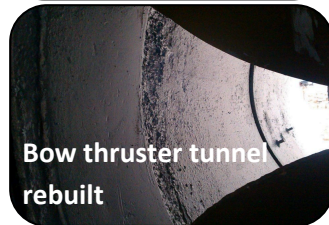
Tested to ASTM D790 10,000psi (703kg/cm²)

Heat Resistance

Suitable for water immersion up to 158°F (70°C) and intermittent contact with steam up to 248°F (120°). Dry heat resistance up to 302°F (150°C).



Bow thruster blade rebuilt



Bow thruster tunnel rebuilt



Process vessel surfaces badly corroded from chemical attack rebuilt using PES 201 Ceramic Repair Paste



Split case pump rebuilt and protected using PES 201 Ceramic Repair Paste and PES 202 Ceramic Repair Fluid



Rudder rebuilt

